

TEST CONDITIONS

Test Date	9/10/2020
Test Conductor	thayes3
Boat Weight as Tested (lbs)	15399
Air Temperature (degrees F)	81
Elevation (ft)	0
Sea State	Calm
Wind Velocity range (mph)	10
Fresh/Salt Water	Saltwater
Fuel Level at Testing (gal)	90

ENGINE SPECIFICATIONS

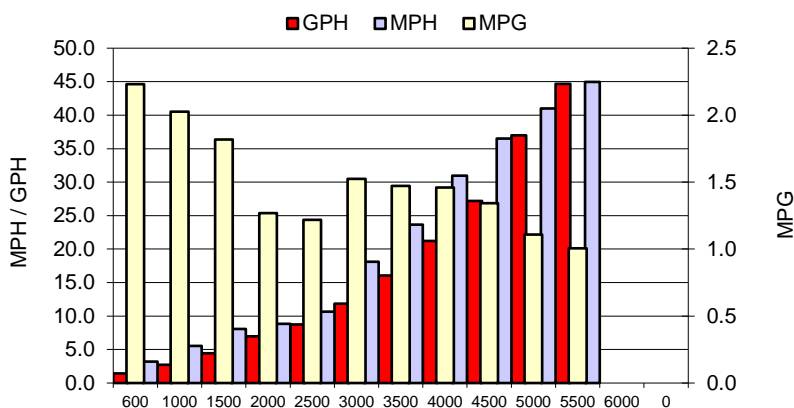
Number of Engines	2
Engine	V8 Verado
Horsepower	300
Cylinders	8
Drive or gear model and ratio	HD Camber 1.85
Mounting Bolt Hole	1,1
Engine Height (in)	12
Engine Setback (in)	14
Engine Length (in)	25, 25

PERFORMANCE SUMMARY

Top Speed (mph @ rpm)	46.1	5679
Acceleration 0 - 20 mph (seconds)	5.2	
Acceleration 0 - 30 mph (seconds)	8.75	

PROPELLER SPECIFICATIONS

Mercury Name	Enertia ECO XP
Material	Stainless Steel
Pitch	17.5,17.5
Number of Blades	3

PERFORMANCE CURVE

BOAT SPECIFICATIONS

Region/s sold	
Manufacturer	MJM
Website	
Boat Model	35z
Boat Type	Sport Yacht/Yacht
Material	Fiberglass
Length (ft)	37.9
Beam (ft)	11
Max hp Capacity	800
Fuel Tank Capacity (gal)	250
Steering Type	Joystick
Dry Boat Weight (lbs)	13279

PERFORMANCE DATA

RPM	SPEED	FUEL CONSUMPTION	FUEL CONSUMPTION	RANGE
RANGE	MPH	GPH	MPG	MILES
600	3.2	1.4	2.2	558
1000	5.6	2.7	2.0	506
1500	8.1	4.4	1.8	455
2000	8.9	7.0	1.3	317
2500	10.7	8.7	1.2	305
3000	18.1	11.9	1.5	381
3500	23.6	16.1	1.5	368
4000	30.9	21.2	1.5	365
4500	36.5	27.2	1.3	336
5000	41.0	37.0	1.1	277
5500	44.9	44.7	1.0	251
6000	0.0	0.0	0.0	0
0	0.0	0.0	0.0	0
0	0.0	0.0	0.0	0